

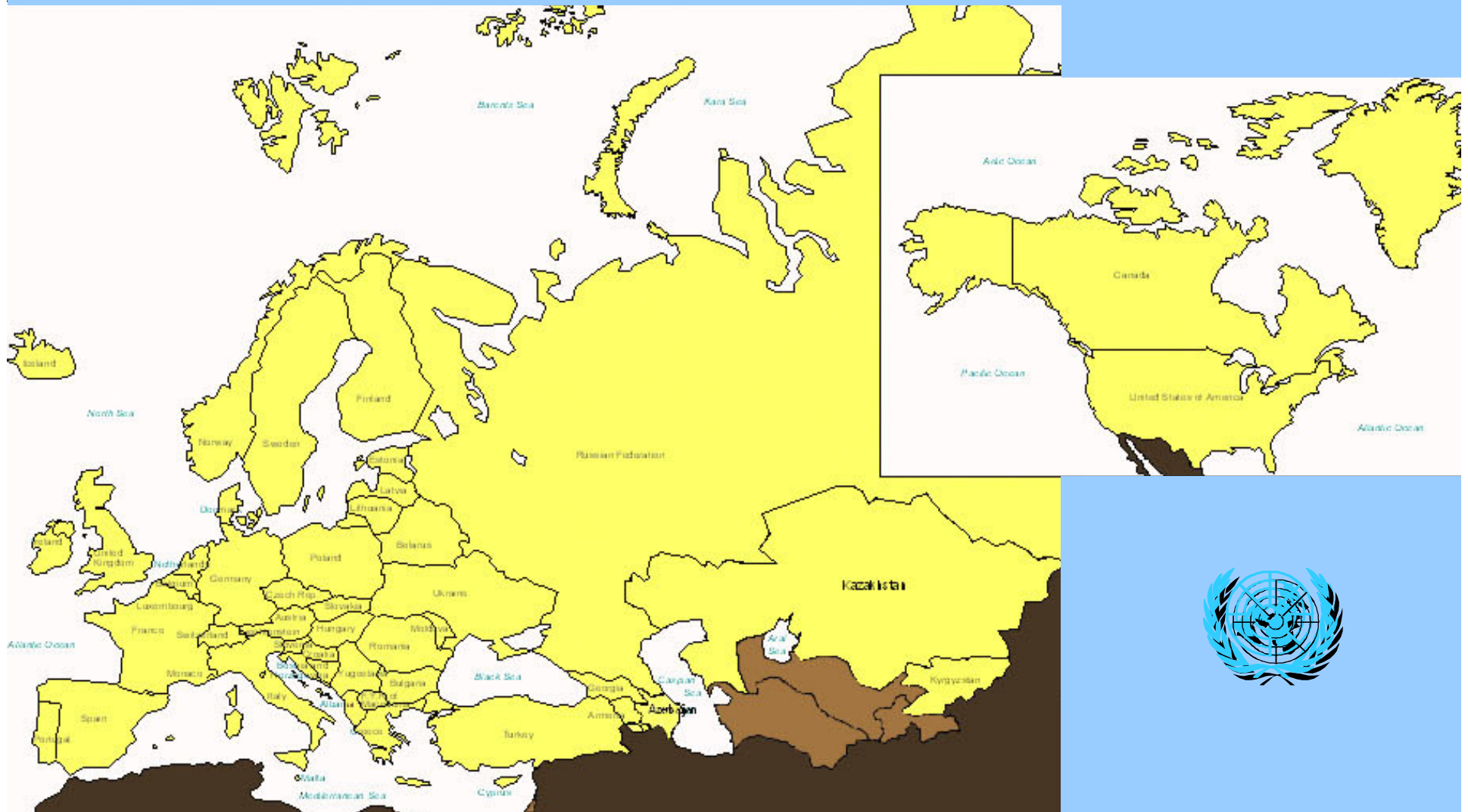
Space-related activities at UNECE



Brinda Wachs
ECE Focal Point on Outer Space Activities
Environmental Affairs Officer

UNITED NATIONS ECONOMIC COMMISSION FOR EUROPE

UNECE Region: Eastern and Western Europe, Central Asia and Caucasus, North America and Israel

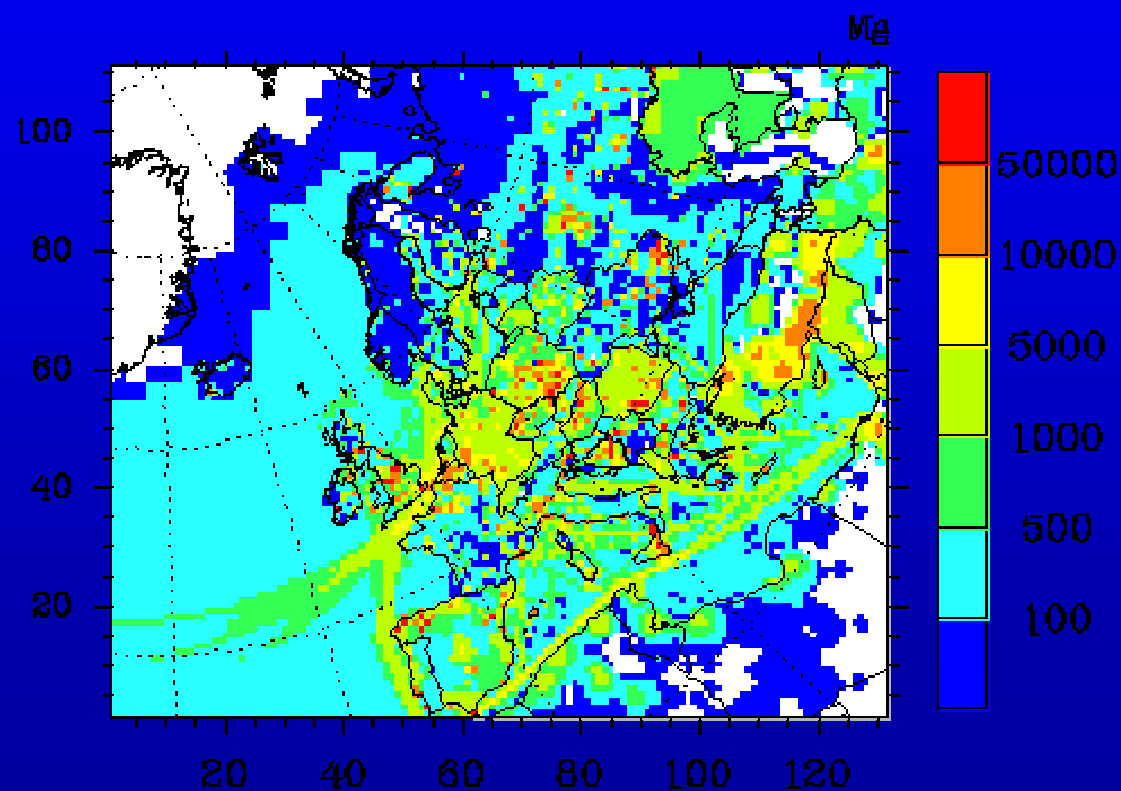


ENVIRONMENT, HOUSING AND LAND MANAGEMENT (EHLM) (1)

Convention on Long-range Transboundary Air Pollution (LRTAP)

- Use of satellite-based monitoring of air pollution
- Transboundary fluxes of PM and ozone
- Mapping and modelling of emissions and depositions using GIS

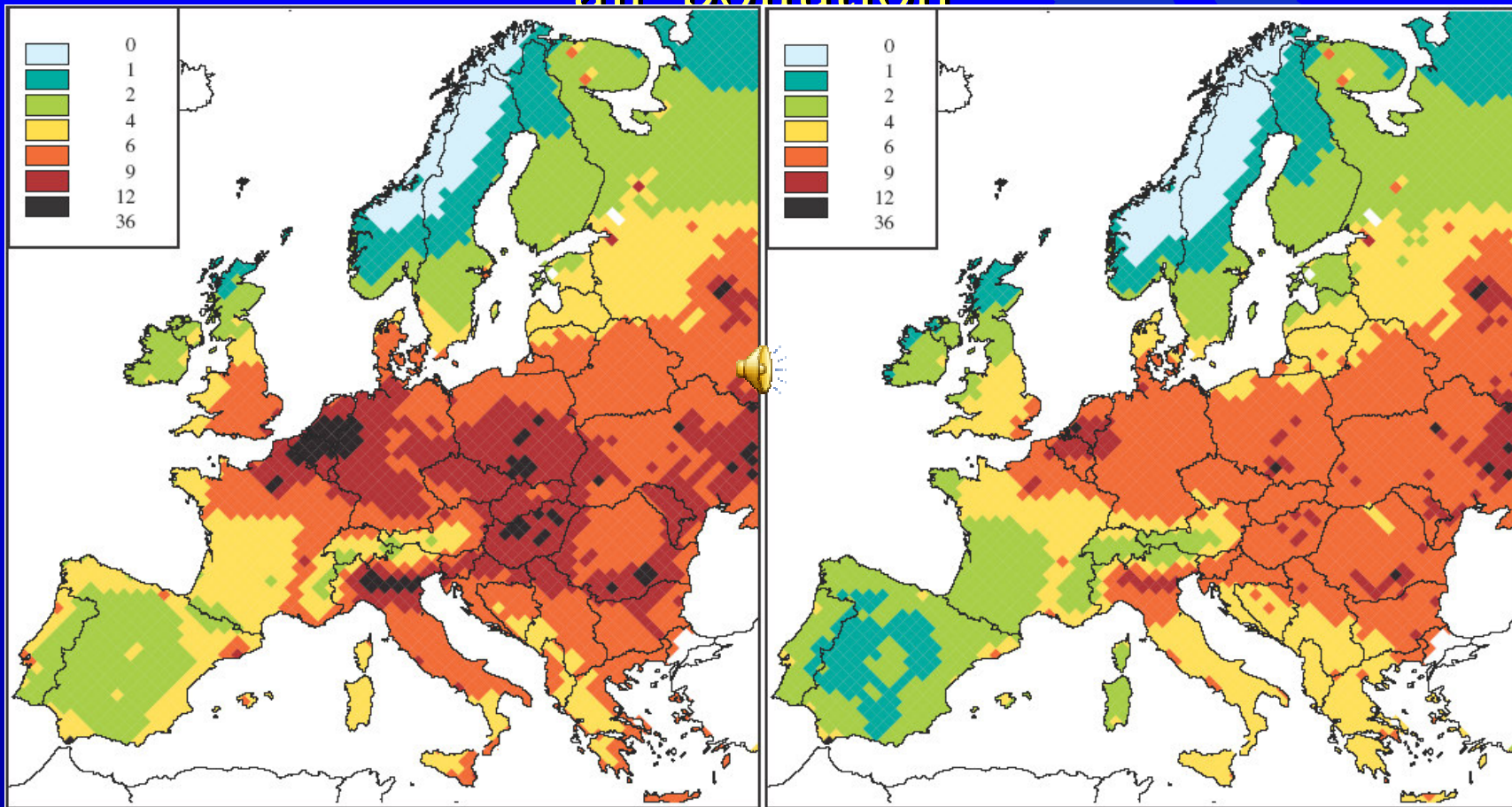
Modelling and mapping of air pollution fluxes under LRTAP Convention



UNITED NATIONS ECONOMIC COMMISSION FOR EUROPE



Spatial information used to map health effects of air pollution



2000

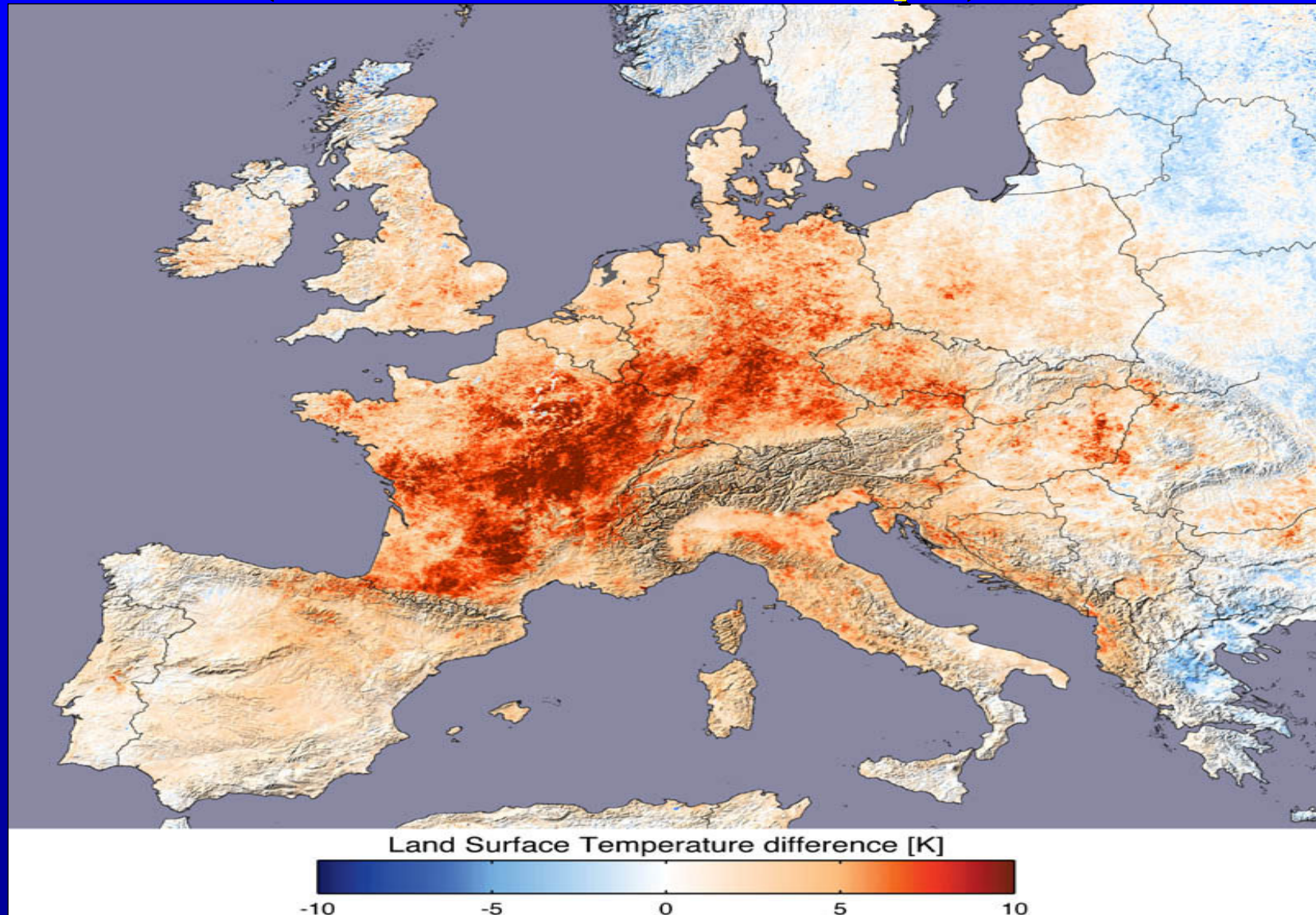
Source:EMEP & IIASA

2010



WHO European Centre for Environment and Health

Satellites track meteorological trends (Summer 2003 in Europe)



EHLM (2): Water cooperation

GPS-mapping sites for water sampling:

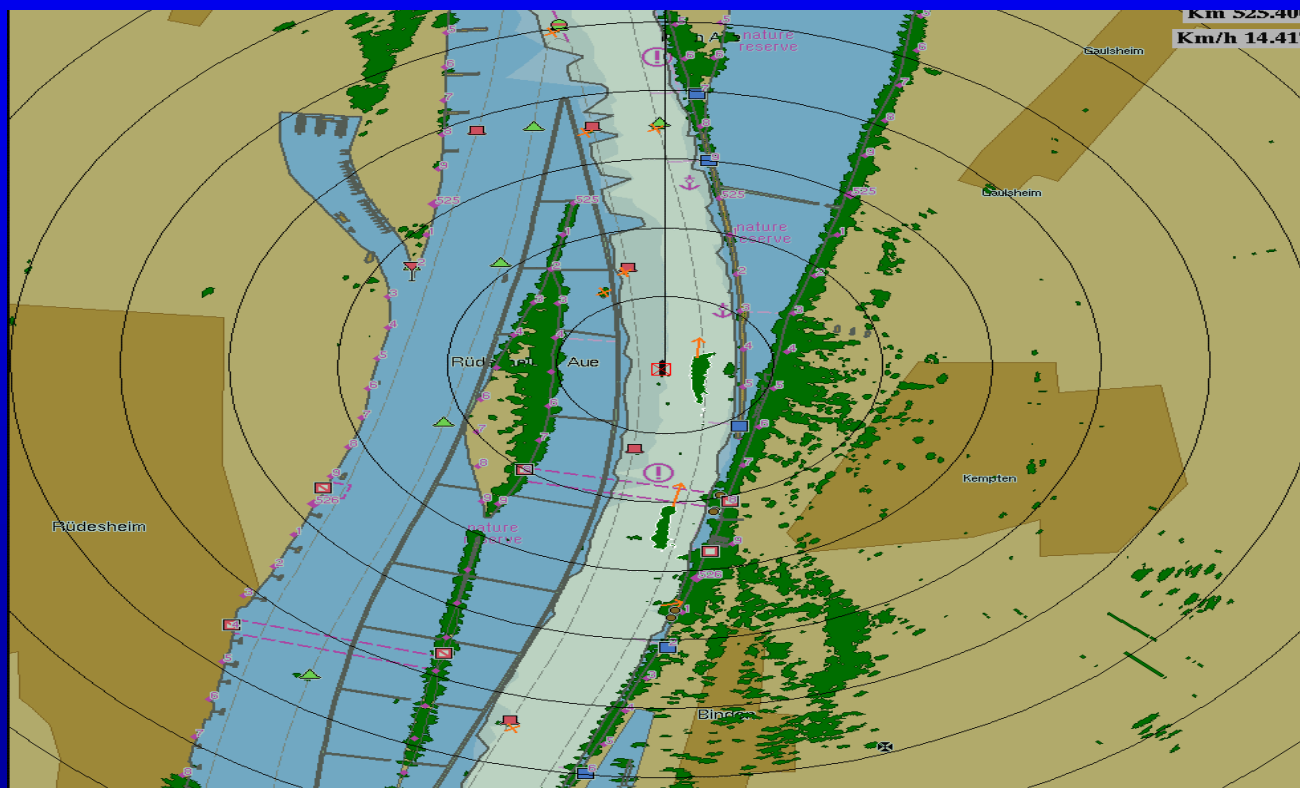
*"UNECE Action Programme to Improve
Transboundary Cooperation and Sustainable
Management of the Dniester River Basin"
(Moldova and Ukraine)*





TRANSPORT DIVISION (1)

Electronic map for Inland Navigation

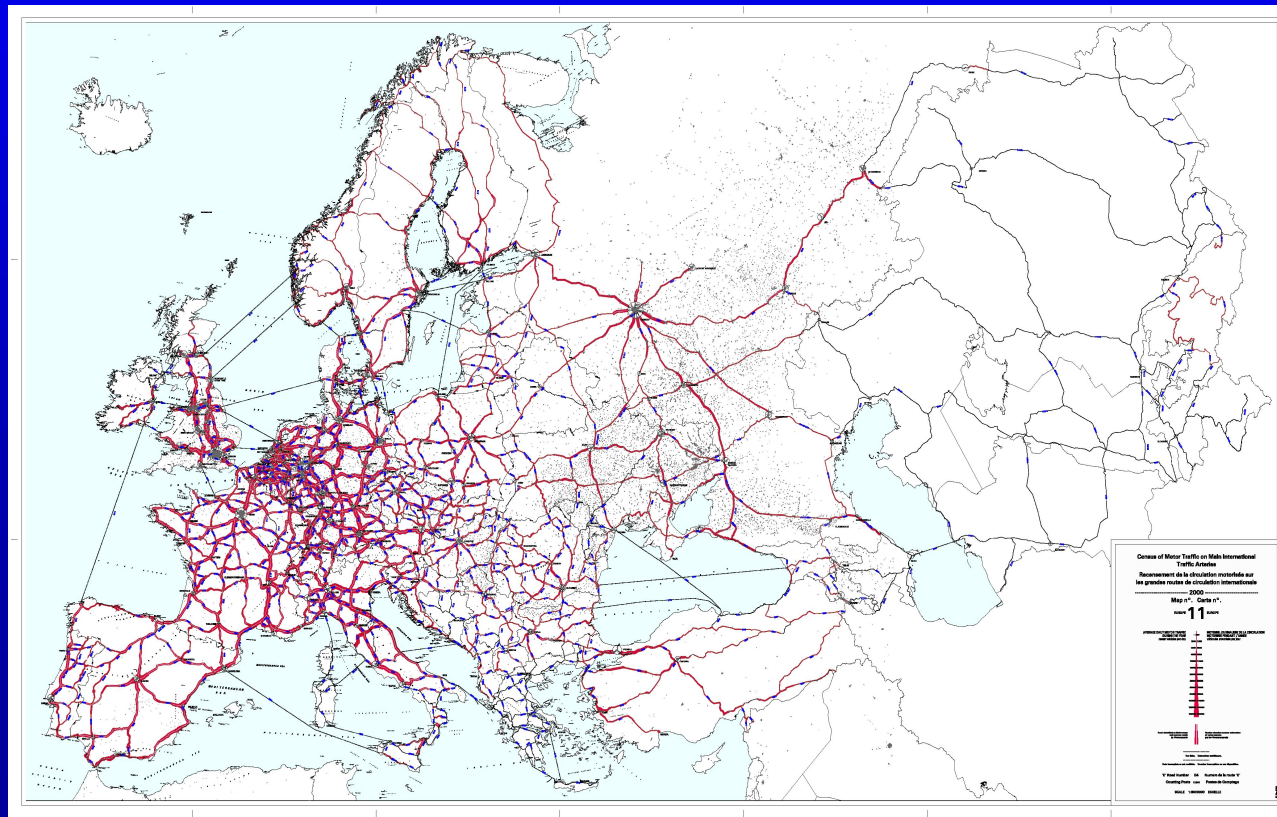


UNITED NATIONS ECONOMIC COMMISSION FOR EUROPE



TRANSPORT DIVISION (2)

GIS Application of European (E-Road) Traffic Census and Road Safety Risk Maps



STATISTICAL DIVISION

GIS Training on census technology,
including census data collection, data
storage and thematic maps and digital atlas
for census data dissemination



THANK YOU FOR YOUR ATTENTION!!

<http://www.unece.org/>

